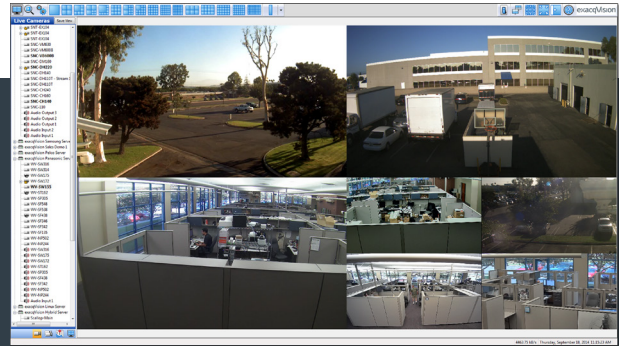


exacqVision LC-Series IP & Hybrid Appliance

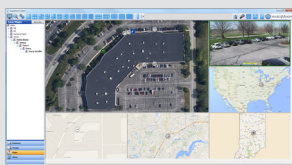


- **All-in-One IP Solutions**
 - Record IP cameras, encoders and analog cameras
 - Available in hybrid and IP NVR models
 - View live and recorded video through free exacqVision client application
- **Connect up to 32 Cameras Per Appliance**
 - Connect up to 16 analog cameras and 16 IP cameras per appliance
 - Compatible with thousands of IP camera models
 - Continuously record up to 100 Mbps of video
- **Powerful, Easy-to-Use VMS Included**
 - Pre-loaded with exacqVision Start VMS software that does the following:
 - Auto detects IP cameras for quick setup
 - Easily add additional IP cameras, up to 16 total
 - Continuous motion, time or alarm-based recording configurable per camera
 - Search recorded video with a timeline or graphical thumbnail search
 - Easily control PTZ cameras
 - Export audio, video and pictures to be easily e-mailed or saved
 - View an instant replay of video from any camera with exacqReplay
- **Optional Input/Output Module**
 - Add configurable trigger inputs and outputs with an optional external USB I/O module
- **View Video Anywhere with Free Client Software**
 - Select the interface that works best for you
 - Access live and recorded video on Windows, Linux or Mac PCs
 - Use the free web service application in any modern browser
 - Download the free Exacq Mobile app available for iOS, Android, Windows Phone 8 and Kindle Fire
- **3-Year Warranty**
 - Includes a 3-year hardware warranty
 - 3 years of unlimited software updates included
- **Easily Upgrade to exacqVision Pro VMS Software**
 - Use appropriate part number to automatically upgrade analog licenses and 4 included IP licenses
 - Simply add IP addresses as needed

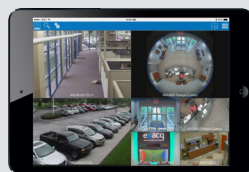
exacqVision **LC-Series**

| ANALOG SETTINGS | | IPS | HYBRID |
|-----------------------------------|--|--|--|
| Inputs | | | 8/16 |
| Compression | | | H.264 |
| Frame Rate | | | 240/480 (NTSC) 200/400 (PAL) |
| Alarm Inputs | | Up to 48 (Optional External) | Up to 48 (Optional External) |
| Alarm Outputs | | Up to 20 24 TTL, 6 Relay (Optional External) | Up to 20 24 TTL, 6 Relay (Optional External) |
| Analog Outputs | | | 1 multiplexed |
| Audio Inputs | | | 8/16 |
| IP SETTINGS | | IPS | HYBRID |
| Maximum IP Cameras | | 16 | 16 |
| Included IP Licenses | | 4 | 4 |
| SERVER | | IPS | HYBRID |
| Pre-Loaded VMS Software | | Start (standard), Professional, Enterprise (optional) | Start (standard), Professional, Enterprise (optional) |
| Typical Video Storage Rate (Mbps) | | 100 Mbps | 100 Mbps |
| Local Client Display Rate (FPS) | | 150 @ HD resolution 600 @ analog resolution | 150 @ HD resolution 600 @ analog resolution |
| Maximum Hard Drives | | 1 | 1 |
| Maximum Storage | | 12T B | 12TB |
| Monitor Output | | HDMI, VGA | HDMI, VGA |
| Operating System | | Ubuntu Linux 14.04 | Ubuntu Linux 14.04 |
| CPU | | Intel Celeron | Intel Celeron |
| RAM | | 4 GB | 4 GB |
| NIC | | 2 x 1 Gbps | 1 x 1 Gbps |
| USB | | 6 (2 front, 4 rear) | 6 (2 front, 4 rear) |
| Keyboard & Mouse | | Included | Included |
| GENERAL | | IPS | HYBRID |
| Dimensions | | 10.9" x 16.9" x 3.5" 27.7 x 42.9 x 8.9 cm | 10.9" x 16.9" x 3.5" 27.7 x 42.9 x 8.9 cm |
| Weight | | 14 lbs. 6.4 kg | 14 lbs. 6.4 kg |
| Regulatory | | CE, FCC, cULus, UL Listed | CE, FCC, cULus, UL Listed |
| Power & Heat | | 40 Watts/135 BTU/h (Typical) 60 Watts/200 BTU/h (Max) | 45 Watts/150 BTU/h (Typical) 70 Watts/240 BTU/h (Max) |
| Operating Temperature | | 40° - 95° F 4.5° - 35° C | 40° - 95° F 4.5° - 35° C |

Related Products



exacqVision VMS Software



Exacq Mobile App



exacqVision
E-Series Encoders



exacqVision A-Series
hybrid NVR



exacqVision Surveillance
Keyboard

www.exacq.com