

exacqVision Edge & Edge+ Full-Featured VMS Software Running on an IP Camera



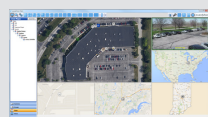
- **Perfect IP Video Surveillance Solution**
 - Full-featured VMS software installed directly on a compatible camera
 - Easy and cost-effective way to deploy high-definition IP video
 - View 10 exacqVision Edge cameras or over 1,000 exacqVision Edge+ simultaneously with included client
- **Ideal exacqVision Edge/Edge+ Applications**
 - **Small Systems** – Save server/installation costs on small video surveillance systems
 - **Fast Deployment** – Completely pre-configured video system prior to installation; no server installation required.
 - **High Reliability** – No single server failure stops all video recording
 - **Unreliable Networks** – Ideal in environments with unreliable wireless or WAN connectivity - camera records even when the network is down
 - **Independent Recording** – Ideal to monitor remote server rooms independently of building surveillance recording
 - **Low Density Locations** – Ideal for remote locations with low camera counts
- **View Live and Recorded Video Anywhere**
 - Included client software runs on Windows, Linux or Mac computers
 - Install free web service software on a PC for web browser and mobile app access
 - Powerful thumbnail and timeline search tools
 - Onscreen display of motion and alarm events
 - Instant replay of video and audio events with exacqReplay
 - Export video in open-standard video formats or as a self-contained player with tamper protection
- **System Continues to Meet Your Growing Needs**
 - Get powerful video management features today, and add more tomorrow through our included, rapid software releases
 - Add new exacqVision Edge/Edge+ cameras as needed
 - Scalable as part of a full exacqVision recorder solution
 - Easy to upgrade to exacqVision Edge+ for more than 10 simultaneous cameras, powerful enterprise features and network storage options
- **exacqVision Edge+ Features:**
 - Archiving and extended storage
 - Multi-streaming
 - Multiple camera export
 - Bookmarking and case management
 - Third-party integrations
 - Enterprise Management
 - Single and nested mapping
 - Custom user groups
 - Remote system monitoring with email notifications
 - Point-of-sale and ATM search
 - SmartSearch
 - Event Linking and notifications
 - Camera groups
 - Audit trail
 - Two-way audio
 - Time lapse recording

SYSTEM	EDGE	EDGE+
Maximum simultaneous cameras per client	10	1,000
Free Windows, Linux and Mac clients	✓	✓
Browser-based viewing of live/stored video	with installation of free PC web service software	with installation of free PC web service software
Tablet/smartphone based viewing of live/stored video	with installation of free PC web service software on a separate computer	with installation of free PC web service software on a separate computer
Client-side dewarp of fisheye/panoramic cameras	camera dependent	camera dependent
Client bandwidth throttling	✓	✓
Pre-post alarm recording	✓	✓
Soft Triggers	✓	✓
Per-camera min/max retention		✓
Audit trail		✓
Custom user groups		✓
Third-party integrations (e.g. access control)		✓
Email notification for system health events		✓
exacqVision surveillance keyboard support		✓
Enterprise camera management		✓
LIVE VIEW	EDGE	EDGE+
View cameras on multiple monitors	✓	✓
PTZ control and presets	✓	✓
Digital PTZ control and presets	✓	✓
Motion and alarm indication	✓	✓
Event linking on video, serial and health events		✓
Camera groups		✓
Multi-streaming		✓
Event notifications		✓
Maps		✓
Two-way audio		✓
Hierarchical maps for fast camera navigation		✓
SEARCH, PLAYBACK, EXPORT & ARCHIVE	EDGE	EDGE+
exacqReplay instant replay	✓	✓
Thumbnail & timeline event search	✓	✓
Multi-camera playback	✓	✓
Export to DVD	✓	✓
Export to .AVI, .MOV or .EXE file	✓	✓
POS and ATM serial text search		✓
Multiple camera export		✓
Time-lapse recording		✓
Archiving		✓
Smart search		✓
Bookmarking		✓
Case management		✓

Related Products



exacqVision NVR



exacqVision VMS Software



Exacq Mobile App



exacqVision Keyboard

www.exacq.com